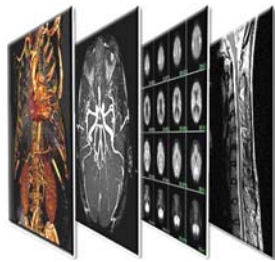
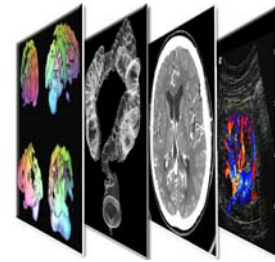


## In This Issue:

- Current Issues at the SMTFIC. by Barry D Pressman, MD FACR
- Tests of Change in O.R. by Lynne Roy, Director, SMTFIC
- Dual-Source CTA eliminates imaging artifacts.
- Rate of deaths from Alzheimer's Disease growing rapidly
- FDA screening guidelines for women with silicone breast implants



# EYE ON IMAGING



November, 2006

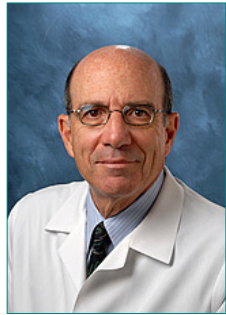


Cedars-Sinai Medical Center  
S. Mark Taper Foundation Imaging Center

Volume 1  
Issue 3

## CURRENT ISSUES

**Barry D. Pressman, MD, FACR**  
Chairman, S. Mark Taper Foundation  
Imaging Center



### NEW WEBVS ENHANCEMENT FOR CASES OF SUSPECTED IMAGING MISREADS

In order to expedite your inquiries concerning cases which you believe have been misread by the Imaging Department, we

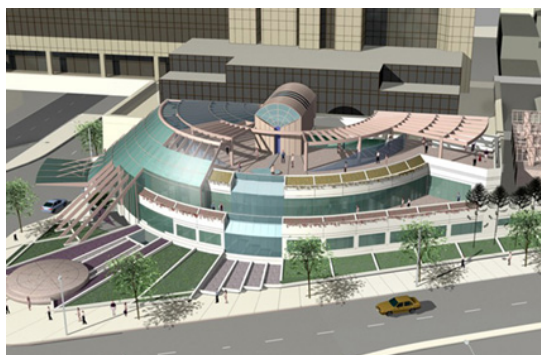
have added a new "button" to WebVS. The button is entitled "MD Feedback." All inquiries made through this new feature are immediately transmitted to the Department Chair as well as to the Peer Review Coordinator for the Imaging Department.

Dr. Pressman, Chair of the S. Mark Taper Foundation Imaging Center, will immediately have the case reviewed to determine if an addendum report is necessary. You will be informed as soon as this inquiry has been completed. In addition, the case will be put through the formal peer-review process.

### PEER REVIEW PROGRAM

You may be interested to know that Cedars-Sinai Imaging has a formal and carefully-monitored peer-review program. Each physician in our department has cases reviewed on a regular basis. The results of these reviews are tracked as a part of the credentialing process.

I welcome your input and suggestions. Please send them to me at [pressmanb@cshs.org](mailto:pressmanb@cshs.org).



## IMPROVEMENTS IN THE OR

**Lynne Roy, MS, CNMT, MBA, MHA**  
Director, S. Mark Taper Foundation  
Imaging Center

A multidisciplinary improvement process (Simpler Project) to reduce waits and delays in the OR was recently completed and several recommendations for tests of change were made. Accordingly, we have instituted the following test of change:

### CHANGES IN STAFFING:

- Increasing the number of technologists assigned to surgery, accompanied by shift changes to better meet demand.

### IMPROVING COMMUNICATION:

- A 'Super Stat' OR pager is being used for retained foreign bodies, with a goal of reducing the response time to less than 20 minutes.
- We have instituted at least three daily face-to-face meetings between the imaging team leader and OR charge nurse so that changes to the schedule can be proactively handled.
- Although we assigned Nextel phones to key staff members we have found that service is not reliable in all areas of the OR. We are switching these out for pagers.
- Our team leader, Tad Dawson, RT has been meeting with key surgeons to understand their imaging needs.
- These are translated into training sessions for the other technologists assigned to surgeries.
- We have also provided additional training to the techs on equipment that is not used on a regular basis.

We hope that these changes, along with others that the entire surgical team has implemented are starting to make a difference.

For questions or comments, contact me at: [roy@cshs.org](mailto:roy@cshs.org)

Visit our website:  
[csmc.edu/imaging-md](http://csmc.edu/imaging-md)

## IN THE NEWS

### Screening MRI For Silicone Breast Implants

The FDA has again approved the use of silicone breast implants. The approval comes with a stipulation that all women with the implants be advised to get regular [Screening Breast MRI](#) exams. The first exam, according to the FDA, should take place three years after implementation, with follow-up exams every two years afterward.

### Dual-Source 64-Slice CTA

"A study presented this week at the American Heart Association (AHA) meeting in Chicago found that [dual-source CTA](#) eliminates most motion artifacts from CT angiography images. Thanks to 90° rotation and use of two x-ray tubes and two detector arrays, DSCT has a temporal resolution of 83 msec, yielding more motion-free images of the coronary arteries, even without the aid of beta-blockers." - Aunt Minnie

### Cedars-Sinai Imaging has the only dual-source 64-slice CT in clinical use in Southern California.

### Alzheimer's: "The Silver Tsunami"

According to the L.A. County Department of Public Health, the death rate for Alzheimer's Disease has increased 220% between 1994 and 2003. Peter Braun, Director of the Los Angeles County Alzheimer's Association, says, "We are in the midst of a tidal wave that is going to transform our society...It's the silver tsunami that is coming upon us."

[Neuro imaging, including PET and MRI](#) of the brain, has been integral in early diagnosis of memory disorders.

Early detection and treatment is the key to delaying Alzheimer's symptoms.

The S. Mark Taper Foundation Imaging Center has a dedicated PET & PET/CT scheduling line.

To Schedule a PET, Call:  
(310) 423-3899

Or use our online  
"Request To Schedule" form.