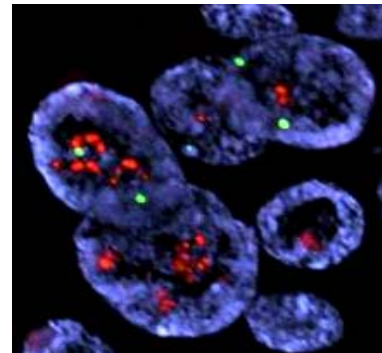
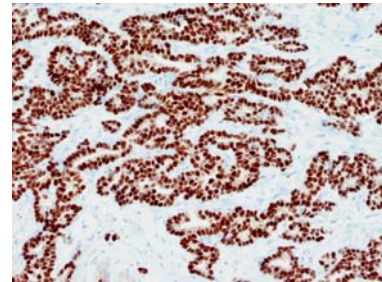
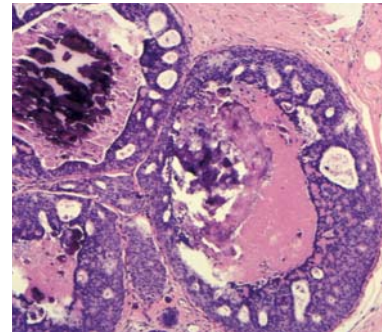


Breast Pathology Service

The Breast Pathology Service is one of the largest in the country, accessioning approximately 2500 specimens annually and more than 600 breast cancers. Comprehensive evaluations of benign and neoplastic breast biopsies and excisions by sophisticated light microscopy, immunohistochemistry and digitized image analysis are offered. Consultation/second opinions are available on breast biopsies diagnosed elsewhere. In addition to services to Cedars Sinai Medical Center we also provide exclusive expert pathology services to the Saul and Joyce Brandman Breast Center which is the largest breast center on the West Coast.

SERVICES PROVIDED

- All reports are issued in accordance with the CAP Cancer Protocol
- All cases are correlated with radiologic findings. Specimen x-rays and x-rays of blocks are examined as required
- Preliminary results are reported within two working day of receipt
- Cases are reviewed and discussed at a multidisciplinary (pathology, radiology, surgery, oncology, radiation oncology and plastic surgery) conference on a weekly basis
- Complete breast prognostic/predictive profile is performed on every new breast cancer case which includes:
 - Estrogen and progesterone receptor evaluation by image analysis
 - Her-2/neu analysis by immunohistochemistry and FISH in accordance with the 2007 ASCO/CAP guidelines
 - Ki67 proliferation index by image analysis



Click here for [consult request form](#)

Contact information:

Shikha Bose, M.D.; Karen A. Scharre, M.D.; Farnaz Dadmanesh, M.D.
Department of Pathology and Laboratory Medicine
8700 Beverly Blvd. Suite 8709, Los Angeles, CA 90048
(310) 423-6611 Tel; (310) 423-0122 Fax

Diagnosis at the Speed of Right