

Gastrointestinal and Liver Pathology Service

HISTOPATHOLOGY

Surgical resections, endoscopic and laparoscopic biopsies, and needle core biopsies

- Medical gastrointestinal biopsies
- Liver biopsies
- GI, hepatobiliary tumor evaluation

CYTOLOGY

- Brushings and washings
- Fine needle aspirations
- Liquid-based technology with cell blocks, allowing the performance
- of special stains, immunohistochemistry, and molecular studies

SPECIAL STAINS

- Diff-Quik, Giemsa or Steiner for *Helicobacter pylori*
- Congo red with polarization for amyloid
- Complete liver panel (trichrome, reticulin, iron, copper, PAS with diastase)
- Others (calcium, bile, mucins, GMS, AFB, PAS/Alcian blue, etc.)

IMMUNOHISTOCHEMISTRY

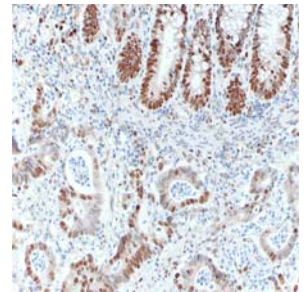
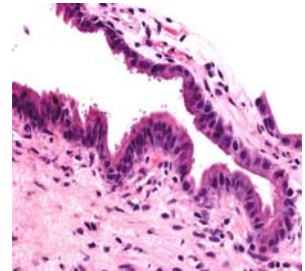
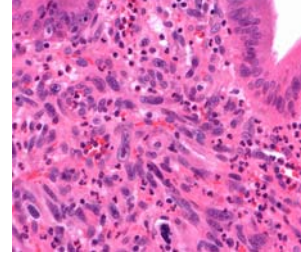
Complete panels, including:

- DNA mismatch repair proteins for colorectal carcinoma (MLH1, MSH2, MSH6, PMS2)
- Therapeutic marker for colorectal carcinoma (EGFR, including in situ hybridization)
- Gastrointestinal stromal tumor profile
- Organ-specific diagnostic markers
- Prognostic markers (Ki-67, p53, etc.)
- Complete lymphoma work-up including flow cytometry
- Infectious agents (*H. pylori*, HBsAg, HBcAg, HSV, CMV, HHV8, EBV in situ hybridization, high-risk and low-risk HPV in situ hybridization, p16, etc.)

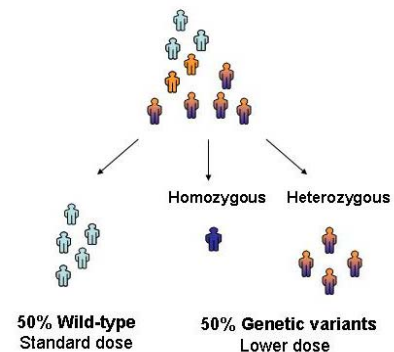
MOLECULAR AND CYTOGENETIC TESTING

Southern blot, PCR, and FISH techniques for:

- Screening for microsatellite instability in colorectal cancer
- Typification of various types of lymphoma
- Ploidy studies
- Irinotecan sensitivity (UGT1A1) [separate brochure available for specimen handling]



Irinotecan Sensitivity Pharmacogenomics



Click here for [consult request form](#)

Contact information:

Hanlin L. Wang, M.D., Ph.D.; Stephen A. Geller, M.D.; Richard B. Mertens, M.D., Ph.D.;
Deepti Dhall, M.D.; Melissa E. Kahn, M.D.; Jing Zhai, M. D. Ph.D
Department of Pathology and Laboratory Medicine
8700 Beverly Blvd. Suite 8709, Los Angeles, CA 90048
(310) 423-6611 Tel; (310) 423-0122 Fax

Diagnosis at the Speed of Right