

Report to the Community 2023



Key Volumes and Other Statistics

JULY 1, 2021–
JUNE 30, 2022



**Patient
Care**



1,022*
Licensed Beds



309,774*
Patient Days



1,797,455*
Outpatient Visits



124,844*
Emergency Visits



50,132*
Admissions



12,600+
COVID-19 Patients
cared for from
Feb. 2020 to Oct. 2022



2,993*
Physicians on
Medical Staff



108,828
Volunteer Hours
donated by
2,622 Volunteers



15,043**
Full-Time
Employees



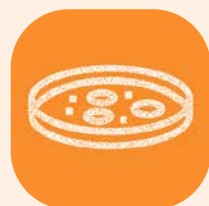
Academics



No. 9 in Total
NIH Funding
among independent
hospitals in the U.S.



190
Grants Totaling
\$102,108,325



597
Clinical Trials



\$232 Million
in Research
Expenses



2,000+
Research Projects



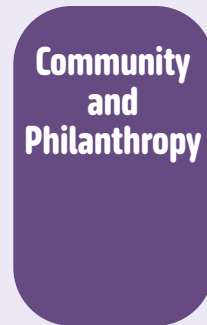
2,800+
Peer-Reviewed
Faculty
Publications



227
Postdoctoral
Scholars



56
PhD and MS
Students



**Community
and
Philanthropy**



\$1,047,742,000
Contribution for
Community Benefit



\$36.5 Million
Grants and
Sponsorships
awarded to L.A.
nonprofit organizations



\$235,876,261
in Philanthropic
Fundraising



11,424
New and Renewed
Donors



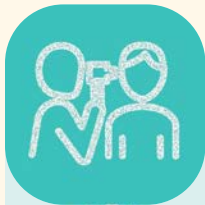
80%
of Which Are Also
Grateful Patients

*Cedars-Sinai Medical Center + Cedars-Sinai Marina del Rey Hospital

** Cedars-Sinai Medical Center + Cedars-Sinai Marina del Rey Hospital + Cedars-Sinai Medical Network

Areas of Impact

Cedars-Sinai has been named the #1 hospital in California and #2 hospital in the nation in *U.S. News & World Report's* Best Hospitals 2022-2023 rankings and placed [among the very best](#) in 11 specialties nationwide. As such, we are deeply committed to leadership and excellence in delivering quality **patient care** for all, expanding the horizons of medical knowledge through innovative biomedical **research**, providing outstanding **education** and training for physicians and other healthcare professionals, improving the health status of the neediest in our **community**, and partnering with **donors** and organizations to support these pillars of our [mission](#).



Patient Care

Cedars-Sinai Guerin Children's, a new 26-bed facility for [advanced pediatric care](#), opened in summer 2022, providing a seamless continuum of primary and specialty care for hospitalized patients and outpatients as they grow from newborns to adolescents to adults.

Our **Geriatrics Program** created a [bone health](#) and falls risk consultation program to catch at-risk people before they break a bone or to help them avoid another fracture in the future.

The Department of **Obstetrics and Gynecology** continued to show leadership in addressing [maternal mental health](#) with a maternal health screening tool for all women who give birth at Cedars-Sinai.

Surgeons in the **Smidt Heart Institute** pioneered the world's first robotically assisted [lung transplant](#) and developed new [minimally invasive techniques](#) that speed healing.

Neurology and Neurosurgery launched the [Acoustic Neuroma and Lateral Skull Base Tumor Program](#), further expanding innovative approaches to treating patients with these noncancerous [tumors](#).

The **Comprehensive Transplant Center** and Smidt Heart Institute completed a record 573 solid organ [transplants](#) in 2021.

The **Cancer Research Center for Health Equity** and Community Outreach and Engagement teams developed a number of key initiatives that aggressively fight [cancer](#) in Southern California communities.



Research

Cedars-Sinai scientists tested whether large batches of **stem cells** can reproduce in a low-gravity environment by sending them up in [space](#).

A new [study](#) from the Smidt Heart Institute showed for the first time that the path toward **heart failure** differs for women and men.

Researchers in the Department of Neurology are [investigating](#) whether using **advanced brain and eye imaging techniques** can help improve diagnosis and treatment of multiple sclerosis.

Practice-changing research from **Cedars-Sinai Cancer** showed that a combination of hormone therapy plus pelvic lymph node radiation improved survival in [prostate cancer](#) patients.

The newly launched [Department of Computational Biomedicine](#) developed **AI tools** to help [spine](#) surgeons predict patient outcomes and address pain medication issues before they arise.

Hepatology experts made a discovery that opens a path toward designing a new treatment for alcohol-associated [liver disease](#).

A study led by Cedars-Sinai investigators was the first to find that infection with the virus that causes **COVID-19** can trigger a [lasting immune response](#) even among people who had mild symptoms or no symptoms at all.



Education

Cedars-Sinai offers 15 **residency programs** and 89 **fellowship programs** in a variety of highly ranked specialties. In FY22, 23% of interviews for medical residencies at Cedars-Sinai were offered to students from underrepresented groups, and 17% of those candidates matched in one of our programs.

Sixteen students graduated in our **master's degree programs** in [Health Delivery Science](#) and [Magnetic Resonance Imaging](#), and six more graduated from our PhD in [Biomedical Sciences Program](#).

The **Geri and Richard Brawerman Nursing Institute** welcomed a record number of new nurses to the [New-Graduate Registered Nurse Residency Program](#), which helps nurses throughout their first year of professional practice. Meanwhile, a shadowing pilot program that paired residents with nurses to help the residents understand a nurse's scope of practice and build stronger professional relationships showed robust [results](#). The Department of Nursing also launched an online platform to provide tools and resources to enhance mentoring relationships among nurses at any phase of their careers.

More than 13,000 learners visited the [Women's Guild Simulation Center for Advanced Clinical Skills](#) and got the opportunity to **train** on the newest equipment under the guidance of experienced leaders in the field.



Community

Cedars-Sinai fulfills its mission by working closely with schools, local government, senior centers and other agencies to improve community health, better meet community needs and expand the capacity of other organizations to serve those who are most vulnerable. In FY22, Cedars-Sinai **awarded a record \$36.5 million** in **grants and sponsorships** to more than 200 Los Angeles organizations working to improve healthcare access, civic engagement, social determinants of health and other nonmedical factors that influence health outcomes.

The **COACH for Kids** program adopted a new care model that connects medically underserved children and their families to free, integrated quality healthcare and other community resources with a single visit to its mobile medical units, in addition to providing physicals and **immunizations**.

Community Connect, Cedars-Sinai's systemwide **social determinants of health program**, focuses on screening patients for health-related social needs and connecting them to community resources. In FY22, the program helped facilitate over 1,500 patient connections to community resources and provided high-touch interventions, such as home visits and resource navigation targeted to specific needs, to 157 patients.



Philanthropy

Through their investments, many visionary philanthropists helped expand the frontiers of medical knowledge and transform our ability to use that knowledge in service of novel studies, treatments and training the next generation of physician-scientists.

A significant gift in the area of **reconstructive and plastic surgery** is **speeding advances in extremity reconstruction, limb salvage and microsurgery**.

An endowed fellowship in **cardiac surgery** is **setting new standards in cardiac training** focused on improving hybrid cardiac procedures, heart and lung transplantations, and heart valve repair.

Thanks to a generous donation to the **Board of Governors Innovation Center**, researchers are **discovering how cells impact human biology** and unlocking approaches to fighting **movement disorders and cancer**.

A sizable contribution to the Cedars-Sinai General Fund is **benefiting patients in diverse areas of urgent need**.

No matter their particular focus, our donors are changing the face of medicine and channeling their creativity and compassion for the good of our entire community.



Growth

In FY22, Cedars-Sinai continued to expand its geographic footprint throughout the region, enabling more people to access exceptional care. After years of community outreach efforts, Cedars-Sinai **Marina del Rey Hospital** broke ground on a [new nine-story building](#).

On the east side, we opened a new 10,000-square-foot location offering [urgent care](#) for adults and children as well as primary care and OB-GYN care in the heart of **Los Feliz**—Cedars-Sinai’s first location serving communities in this area.

After formalizing our affiliation with Huntington Health in August 2021, Cedars-Sinai Cancer welcomed nine [oncology specialists](#) to its affiliate, Huntington Cancer Center. The cancer specialists will be based at Huntington’s Pasadena campus, making it easier for **San Gabriel Valley** residents to access innovative clinical trials and lifesaving treatment options.

The Cedars-Sinai Department of Neurology created a new role, vice chair for system integration, to spearhead the [expansion of neurological care](#) to affiliated **regional hospitals** and their communities.

Cedars-Sinai International also expanded its global presence with [growing affiliations](#) with partners in the Middle East, China, Mexico and beyond—including the latest one in Qatar—part of several major efforts to bring world-class care closer to patients around the globe.

Financial Snapshot JULY 1, 2021–JUNE 30, 2022

INCOME AND EXPENSES

Revenues from patient care and other sources	\$5,225,088,000
Expenses	\$4,908,684,000
Operating income	\$ 316,404,000
Nonoperating income	\$ (336,062,000)
Net loss to reinvest in Cedars-Sinai's mission	<u>\$ (19,658,000)</u>

USES OF NET INCOME

Long-term debt to be repaid	\$2,154,129,000
Capital expenditures for facilities, renovation, technology, other	\$ 340,572,000
This year's payment on long-term debt	\$ 35,271,000

COMMUNITY BENEFIT CONTRIBUTION

Unreimbursed cost of direct medical care for the poor and underserved (excludes the unreimbursed cost of caring for Medicare patients)	\$ 192,138,000
Charity care and uncompensated care for the underinsured/uninsured \$44,742,000	
Unreimbursed cost of caring for Medi-Cal patients \$147,396,000	
Unreimbursed cost of direct medical care for Medicare patients	\$ 548,989,000
Unreimbursed cost of specialty government programs	\$ 6,088,000
Community benefit programs, charitable contributions, and education and training for physicians and other health professionals (includes hundreds of free community education and medical screening/immunization programs offered at the medical center and in local schools, homeless shelters and community centers)	\$ 178,023,000
Research programs	\$ 122,504,000
Total cost of research \$270,037,000	
Less: Research funding from grants (\$147,533,000)	
Total quantifiable community benefit	<u>\$1,047,742,000</u>

Leadership

EXECUTIVE MANAGEMENT

Thomas M. Priselac
President and CEO,
Warschaw Law Chair in
Health Care Leadership;
President and CEO,
Cedars-Sinai Health
System

Terri Wagner
Cammarano, JD, LLM
Senior Vice President
of Legal Affairs and
General Counsel

Bryan Croft
Senior Vice President
of Operations

Richard B. Jacobs
Executive Vice President,
System Development

John E. Jenrette, MD
Executive Vice President,
Cedars-Sinai Medical
Network

Craig Kwiatkowski,
PharmD
Senior Vice President
of Enterprise Information
Services and Chief
Information Officer

David Marshall,
JD, DNP, RN, FAAN
Senior Vice President and
Chief Nursing Executive

Jill Martin
Senior Vice President and
Chief Operating Officer,
Cedars-Sinai Medical
Network

Shlomo Melmed, MB, ChB
Executive Vice President
of Academic Affairs,
Dean of the Medical
Faculty and Professor
of Medicine

Arthur J. Ochoa, JD
Senior Vice President,
Advancement, and Chief
Advancement Officer

Andrew Ortiz
Senior Vice President and
Chief Human Resources
Officer

Richard V. Riggs, MD
Senior Vice President
of Medical Affairs and
Chief Medical Officer

Jeffrey A. Smith,
MD, JD, MMM
Executive Vice President
of Hospital Operations and
Chief Operating Officer

Doug Sturnick, MBA
Senior Vice President
of Managed Care and
Payer Relations

David M. Wrigley
Executive Vice President
and Chief Financial Officer,
Cedars-Sinai Health
System

BOARD OF DIRECTORS

James Lippman, Chair
David Kaplan, Vice Chair
Mohamed “Mike” Ahmar,
Secretary

Sonu Ahluwalia, MD
John Bendheim
Laura W. Brill
Dale Cochran
Marc Edelstein, MD **

Ari Engelberg
Abby Feinman
Russell Goldsmith
Mark S. Greenfield

Kimberly Gregory, MD
Eric Holoman
Jeffrey Katzenberg

Michelle Kittleson, MD
Thomas J. Leanse
David Lee, MD, MPH, MBA
Debra Lee, Esq.

Jose de Jesus Legaspi
Joshua Lobel
Peggy Miles, MD
Zuri Murrell, MD
Lawrence B. Platt*

Thomas M. Priselac
Marc H. Rapaport*
Steven Romick
David Sadkin

Kenneth Samet, FACHE
Gina Sanchez
Mark S. Siegel*
G. Gabrielle “Gabi”
Starr, PhD

Emmeline Widjaja
Jay Wintrob
Clement Yang, MD

LIFE TRUSTEES

Judy Carroll
John Coleman
Robert C. Davidson
Maxine N. Dunitz
Robert M. Eller
Aaron R. Eshman
Chester Firestein
Marilyn Gilfenbain
Vera Guerin
Andy Heyward
Sue Neuman Hochberg
Irwin Hoffman, MD

Steven Koh
Stewart Kwoh
Sally Kurtzman
Marion Laurie
Don Levin***
Cookie Markowitz***

Edward Meltzer
Walter Mirisch
Todd M. Morgan
James A. Nathan
Steven Nichols
Luis Nogales
Lynda Oschin
David Saperstein
Steven Spielberg
Barbra Streisand
Leslie Vermut
Walter Zifkin

*Past Chair of the Board

**Chief of Staff

***Honorary Life Trustee

“With your help,

Cedars-Sinai continues to lead the way as we address the complex and changing healthcare needs of one of the most diverse regions in the nation. We are deeply grateful to have the support of people and organizations who share our longstanding dedication to improving the lives of people in Los Angeles and beyond.

”

James Lippman
Chair, Board of Directors

Thomas M. Priselac
President and CEO

