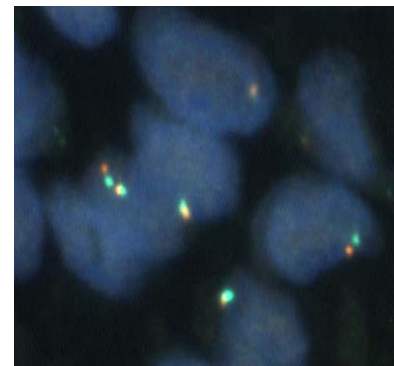
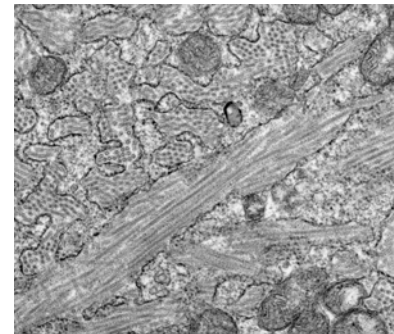
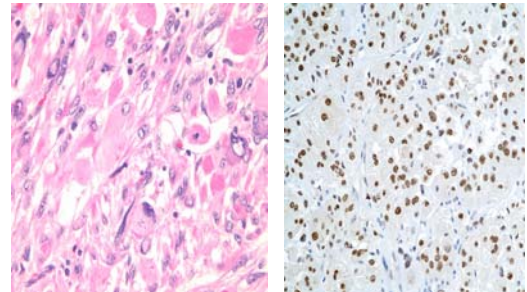


Soft Tissue and Bone Pathology Service

The soft tissue and bone pathology service offers comprehensive evaluation of benign and neoplastic diseases of bone and soft tissue, based on core and/or open biopsies, curettings, and excisions. The diagnosis is based primarily upon light microscopy, with ancillary studies in immunohistochemistry, cytogenetics, and fluorescence in situ hybridization as required. We also offer consultation/second opinions on biopsies diagnosed elsewhere.

SERVICES PROVIDED

- All reports are issued in accordance with the CAP Cancer Protocol
- All cases are correlated with radiologic findings, when available
- Specimen x-rays for bone tumors are examined required
- Preliminary results are reported within two working days of receipt
- We have a specialized protocol for all sarcomas:
 - Examination of formalin fixed , H&E stained sections
 - Immunohistochemistry, as required
 - Fresh tissue for cytogenetics, as required
 - Fluorescence in situ hybridization, as required
 - Electron microscopy if needed
- We offer a comprehensive immunohistochemical panel as well as cytogenetic studies, as appropriate, for small round blue cell tumors, pleomorphic spindle cell and monophasic spindle cell tumors



Click here for [consult request form](#)

Contact information:

Richard B. Mertens, MD, PhD; Xuemo (Sean) Fan, MD, PhD; Bonnie L. Balzer, M.D., Ph.D.
Department of Pathology and Laboratory Medicine
8700 Beverly Blvd. Suite 8709, Los Angeles, CA 90048
(310) 423-6611 Tel; (310) 423-0122 Fax

Diagnosis at the Speed of Right