

Dermatopathology Service

The Dermatopathology service reviews approximately 20,000 cases per year, both for primary diagnosis and consultation/second opinion by board certified dermatopathologists. Our wide spectrum of services includes routine sectioning, special histochemistry, immunohistochemistry, chromogenic in situ hybridization, direct immunofluorescence, and horizontal sections for evaluation of alopecia. A large majority of cases are signed out within one working day. All melanoma reports are formatted according to College of American Pathologists/American College of Surgeons standards. New diagnoses of melanoma and lymphoproliferative malignancies are called back to the referring clinician or pathologist, as are any unusual case results. Subspecialists in hematopathology are involved in our multidisciplinary approach to lymphoproliferative disorders.

HISTOPATHOLOGY SERVICES

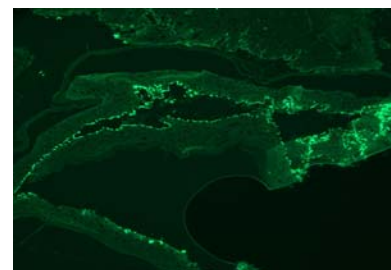
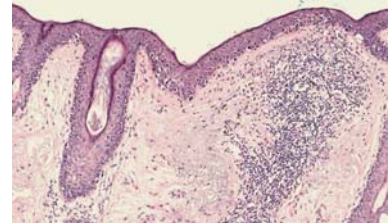
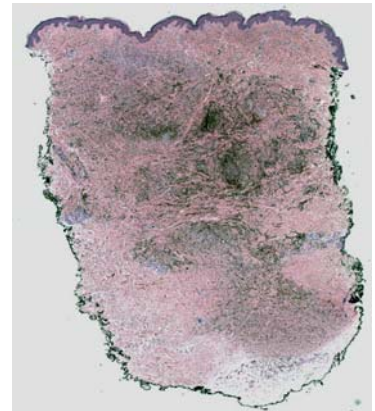
- Skin biopsy for inflammatory conditions
- Skin biopsy/excision for tumors
- Sentinel lymph node biopsy for melanoma
- Scalp biopsy for evaluation of hair loss
- Nail biopsy

SPECIALTY STAINS AND STUDIES

- Full range of immunohistochemical stains for tumor diagnosis
- Chromogenic in situ hybridization for viral agents
- Full range of special histochemical stains for tissue and organisms
- Direct immunofluorescence for evaluation of blistering disorders autoimmune disease, and vasculitis.

IN HOUSE SPECIALTY CONSULTATION

- Hematopathology
- Microbiology
- Pediatric pathology



Click here for [consult request form](#)

Contact information:

David P. Frishberg, M.D.; Bonnie L. Balzer, MD, PhD; Catherine I. Barry, DO
Department of Pathology and Laboratory Medicine
8700 Beverly Blvd. Suite 8709, Los Angeles, CA 90048
(310) 423-6611 Tel; (310) 423-0122 Fax

Diagnosis at the Speed of Right