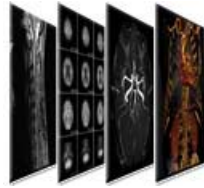
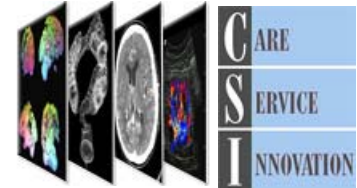


- In This Issue:**
- New Barium Enema Preparation
 - Adjusting to CS-Link
 - 3-T MR Scanner
 - Veriphy User's Guide
 - Case of the Month
 - IR Clinic Phone Line



EYE ON IMAGING



March, 2009



Cedars-Sinai Medical Center
S. Mark Taper Foundation Imaging Center

Volume IV
 Issue 1

QuickLinks: [Imaging Website](#) | [Request To Schedule](#) | [Order Film Copies On Line](#) | [Web/VS Login](#) | [Previous Issues](#)

CS-Link

After months of training and preparation, the switch over to CS-Link was made a few weeks ago campus-wide. The change-over was a success, but as we were learning the new system, our scheduling hold times increased. Today, we are pleased to say our hold times have already begun to drop.

We know that in the long run, this "one patient, one record" system will benefit medical professionals and patients alike. We ask you to bear with us as our staff becomes more accustomed to this new system.

3-T MR Scanner



Our new 3T MR is now operational. This technology is designed for advanced MR imaging. We are utilizing this machine for both research and clinical studies. We currently restrict its use to specialized brain exams, spectroscopy, pituitary, prostate, MRA, and wrist imaging.

Veriphy User's Guide

As a service to our ordering clinicians, we have created an online Veriphy User's Guide. The guide provides information such as:

- How critical results are classified by the imaging physician.
- The notification times and methods for each level of critical results.
- Phone and ID number information for the retrieval of messages by the ordering clinician.
- Link to the profile form, for both physicians new to the system and for those wishing to amend their profile.

[Click to view the guide.](#)

NEW BARIUM ENEMA PREPARATION



Richard J. Sukov, MD, FACR
 Chief of Gastrointestinal Radiology
 S. Mark Taper Foundation Imaging Center

Dear Colleagues,

The Food and Drug Administration has released a warning on the use of oral sodium phosphate when used in bowel preparation. The FDA took this step after receiving reports of acute phosphate nephropathy associated with this preparation, including cases where there were no identifiable factors signaling that the patient was at risk of developing acute kidney injury. ([To read the FDA advisory, click here.](#))

Because of this warning, Fleet Enema #3 (also known as Fleet EZ-Prep) was voluntarily removed from the market.

In view of this, we have changed our recommended bowel preps for the following exams:

- Barium enema
- Air contrast barium enema
- XR enema with water-soluble contrast (when not a trauma case)

The prep for virtual colonoscopy remains the same as before (Lo-So prep).

Instead of the Fleet #3, we now recommend that adults (over the age of 16) use a magnesium citrate oral solution and Dulcolax (Bisacodyl) tablets. If your patient is on a salt-restricted diet or has severe renal insufficiency, alternative bowel preparations are available.

The new preparation instructions are as follows:

Adult Preparation for Barium Enema

Day Prior to Exam:

Breakfast: Clear soup (any broth); strained fruit juices without pulp; flavored jello of any color (do not add extra ingredients); soft drinks, black coffee or plain tea.

Noon: Clear soup (any broth); strained fruit juices without pulp; flavored jello of any color (do not add extra ingredients); soft drinks, black coffee or plain tea.

1:00pm Drink one (1) full 8 fl. oz glass of water

2:00pm Drink one (1) full 8 fl. oz glass of water

3:00pm Drink one (1) full 8 fl. oz glass of water

4:00pm Drink one (1) full 8 fl. oz glass of water

Dinner:

5:00pm Clear soup (any broth); strained fruit juices without pulp; flavored jello of any color (do not add extra ingredients); soft drinks, black coffee or plain tea.

5:30pm 10 oz. bottle of Magnesium Citrate Oral Solution

6:00pm Drink one (1) full 8 fl. oz glass of water

7:00pm Drink one (1) full 8 fl. oz glass of water

7:30pm Take two (2) 5 mg Dulcolax (Bisacodyl tablets) with an 8 fl. Oz glass of water. **DO NOT CHEW TABLETS**

8:00pm Drink one (1) full 8 fl. oz glass of water

9:00pm Drink one (1) full 8 fl. oz glass of water. Do not eat after 9:00pm.

Day of

Clear liquids only.

In addition, the guide (as well as our Web/VS User's Guide) can be accessed from the left navbar on our for-physicians website:

www.csmc.edu/imaging-md

**Case of the Month
March, 2009**



[View our case of the month for March, 2009. Submitted by Daria Motamedi, MD.](#)

**Interventional Radiology Clinic
Phone line**

Our Interventional Radiology Clinic can be reached by phone two different ways:

1. By calling our main **310.423.8000** number and selecting option # 5, or
2. By dialing the direct clinic line at: **310.423.8694**.

Exam: NPO during 4 hours prior to exam.

Pediatric Preparation for Barium Enema

Newborn to 4 years

No prep.

4 years to 16 years

1. Clear liquid dinner and clear liquids only on the day of the exam.
2. NPO 4 hours prior to exam.

These preparations are available for easy access on our website ([Click here to view.](#))

If you have any questions, please contact me at 3-5655 or by [e-mail](#).

Sincerely,
Richard Sukov

Visit our website:
<http://www.csmc.edu/imaging-md>