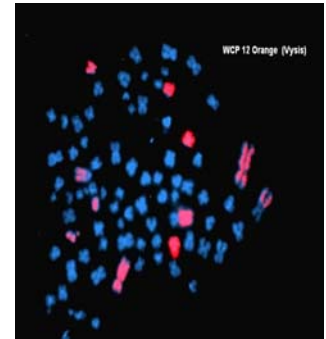


## Molecular Pathology Assays & Consultation Service

### PROGRAM HIGHLIGHTS

- **Integration** of molecular testing results with clinicopathological information
- **Pharmacogenomics-based warfarin** sensitivity assay
- **High-risk HPV** assay with reflex HPV16/18 highly associated with cancer
- **Ultrasensitive quantitative PCR** in CML for Gleevec therapy monitoring
- **Detection of short & variant form APL** by RT-PCR associated with ATRA resistance
- **Ultrasensitive B and T-cell receptor** gene rearrangement assay by PCR

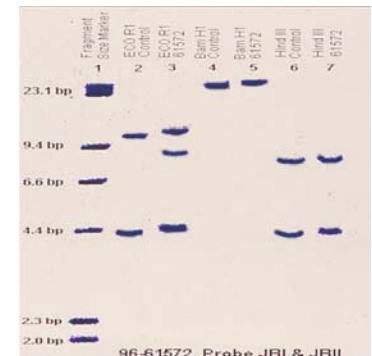


### HEMATOPATHOLOGY

- **Lymphoproliferative disorders**
  - B & T-cell receptor gene rearrangements by PCR
  - B & T-cell receptor by Southern blot
- **Myeloproliferative Disorders**
  - Chronic Myelogenous Leukemia: Quantitative RT-PCR BCR-ABL (M-BCR & m-BCR)
  - Chronic Myeloproliferative Disorders (PV, ET, CIMF): Quantitative PCR JAK2 V617F
  - Acute Promyelocytic Leukemia: Quant RT-PCR for PML-RARA (bcr1, bcr2, & bcr3)

### INFECTIOUS DISEASES

- HIV quantitative viral load
- HBV quantitative viral load
- HCV quantitative viral load and qualitative
- HCV genotyping
- Chlamydia trachomatis
- Neisseria gonorrhoea
- HPV with reflex HPV16/18 on cytology and tissue
- Streptococcus



### GENETICS

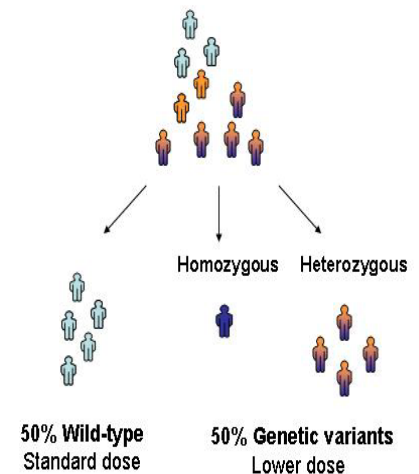
- Factor V Leiden mutation
- Prothrombin mutation
- MTHFR mutation

### PHARMACOGENOMICS

- Warfarin sensitivity (CYP2C9 & VCORK1)
- Irinotecan sensitivity (UGT1A1)

### **To be released soon!**

- Cystic Fibrosis by Invader, December 2007
- FLT3/NPM1 in cytogenetically normal AML by PCR, January 2008
- EGFR mutation by PCR Gefitinib sensitivity/resistance in non-small cell lung cancer, March 2008



Click here for [consult request form](#)

### Contact information:

Jean R. Lopategui, M.D. Stephen Nichols, M.D. Stephen Lee, M.D.  
Randa Alsabeh, M.D. Oxana, Tcherniantchouk, M.D.  
Department of Pathology and Laboratory Medicine  
8700 Beverly Blvd. Suite 4711, Los Angeles, CA 90048  
(310) 423-5471 Tel; (310) 423-0483 Fax