

CEDARS-SINAI

S. MARK TAPER FOUNDATION
IMAGING CENTER

Imaging Map and Parking Information

Visit us at www.cedars-sinai.edu/imaging

All Addresses: Los Angeles, CA 90048
(310) 423-8000

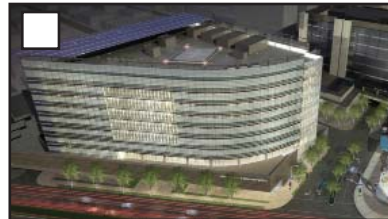
Notes: _____

P Cedars-Sinai Parking



A S. Mark Taper Foundation Imaging Center

Corner of San Vicente Blvd.
& Gracie Allen Dr.
8705 Gracie Allen Drive
Valet and Patient Drop Off in Front;
Valet and Self-Parking in Lot P4



B Advanced Health Sciences Pavilion

127 S. San Vicente Blvd.
Suite # A-2500
(Imaging on Plaza Level)
Valet and Self-Parking Available in Lot P4



C Marcia Israel Mammography Center

310 San Vicente Blvd.,
2nd Floor
Parking On Site



D Medical Office Towers

8631 W. Third St.,
Suite 120 East, 1st Floor
Parking Lot P4 Suggested



E Mark Goodson Building

444 San Vicente Blvd.
(MRI on Street Level)
Parking On Site



S. Mark Taper Foundation Imaging Center Floorplan

